

CAPRItoEXCEL Com-Addin

Alexander Gocht

18/3/2016

Background

The CAPRI model produces for each policy simulation data, which are stored in GDx file. The program CAPRItoEXCEL allows selecting as many scenario files and writing thematic positions (using a filter string for the five dimensions of the GDx file) into EXCEL.

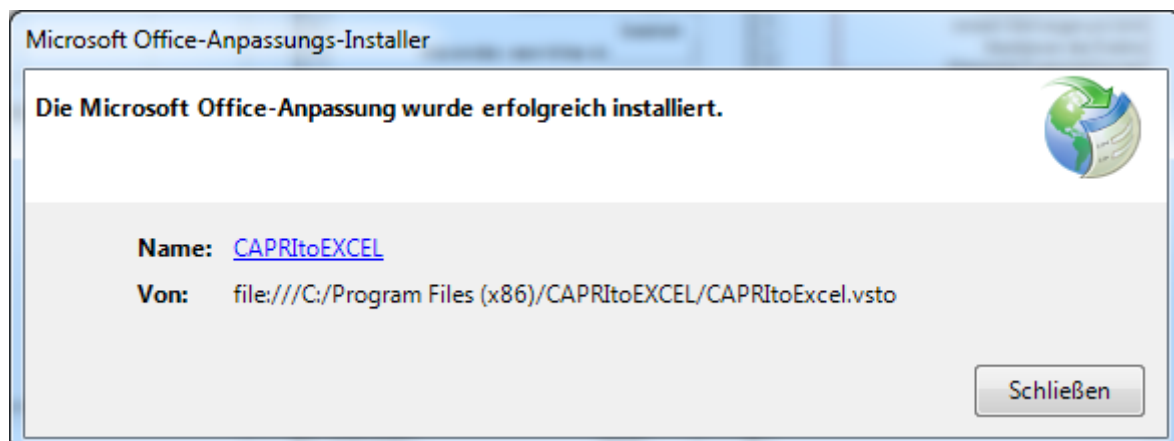
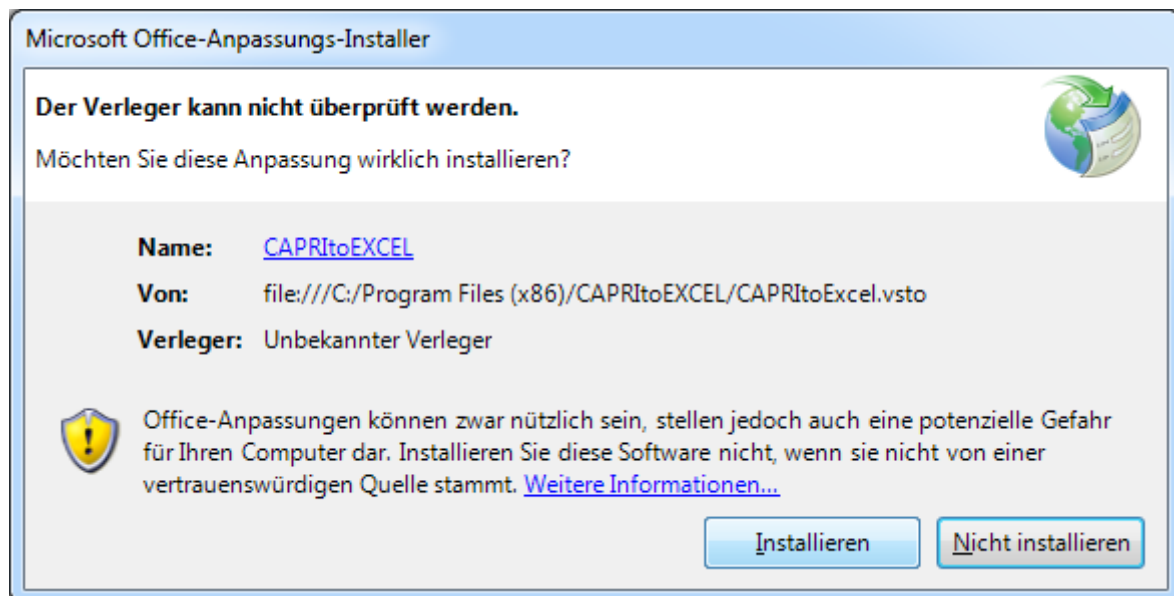
Requirement

- MS Office Excel 2013 and greater (32 bit Version) on a Windows machine
- Microsoft .NET Framework 4
- gdxio.dll and gdxlclib.dll in SysWOW64 in the Windows folder from any Gams Version like 24.7

Tested for Office Excel 2013 with Libraries (dll) from GAMS 24.7.1

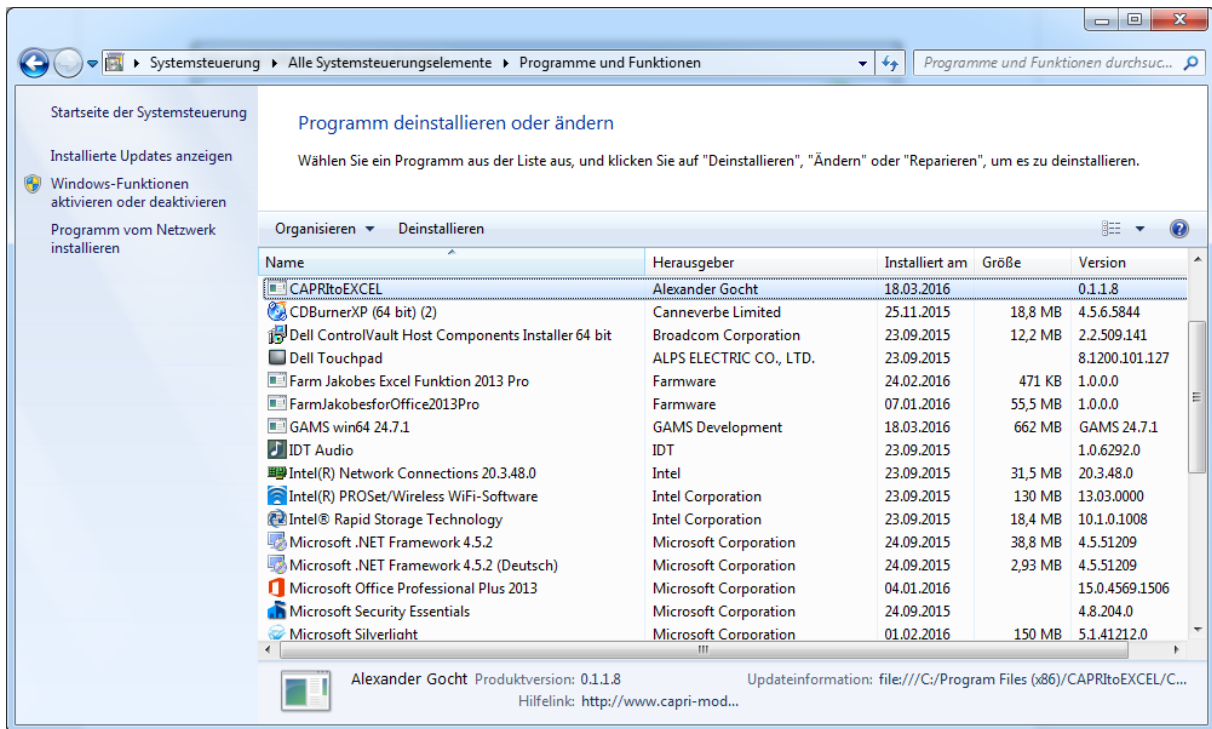
Installation

Please unzip and store the install folders somewhere permanently on your Computer. Please do not remove it as the uninstalling routine needs it. Execute the setup.exe and follow forms appear:

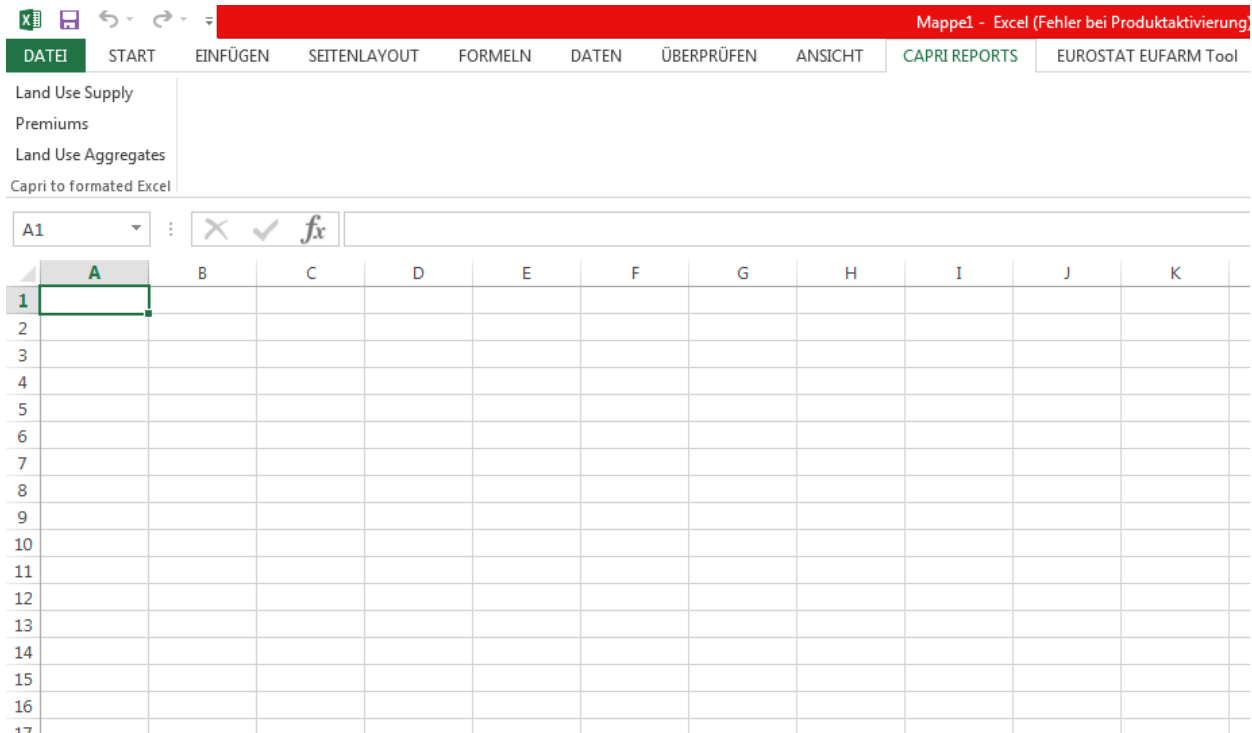


You need to agree that the program origin is not proofed.

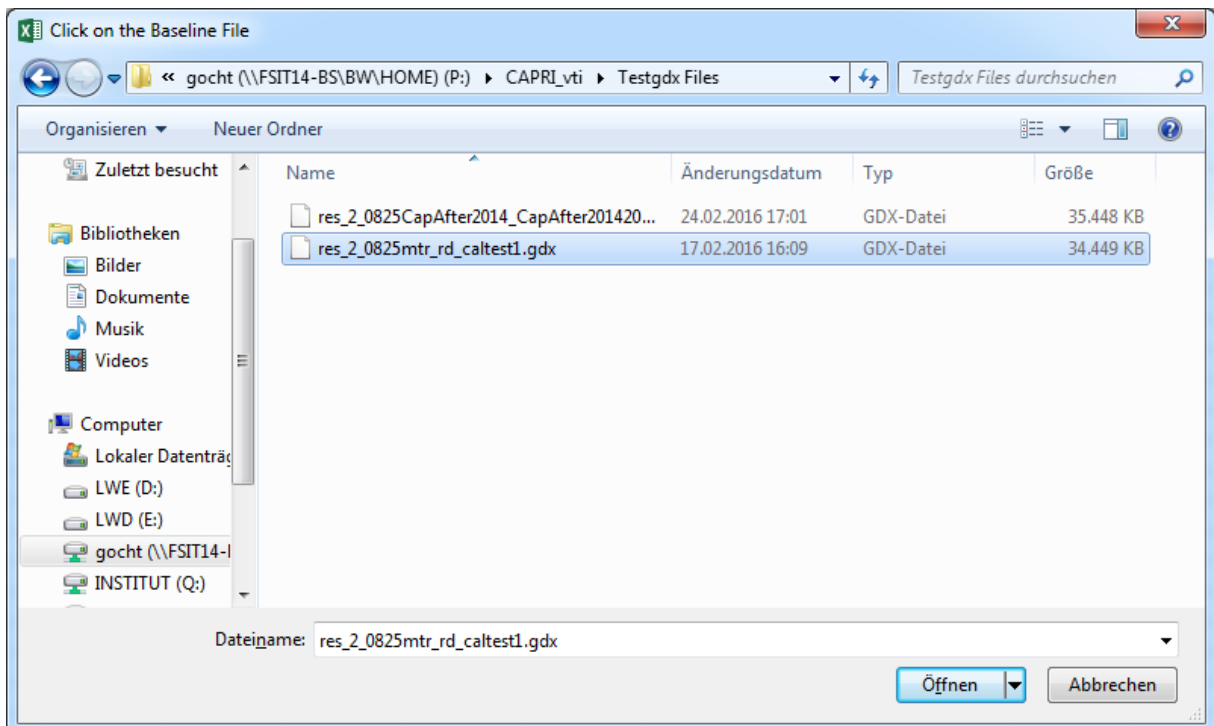
After the installation, the program CAPRITOEXCEL can be found in system of your computer and can be uninstalled from there.



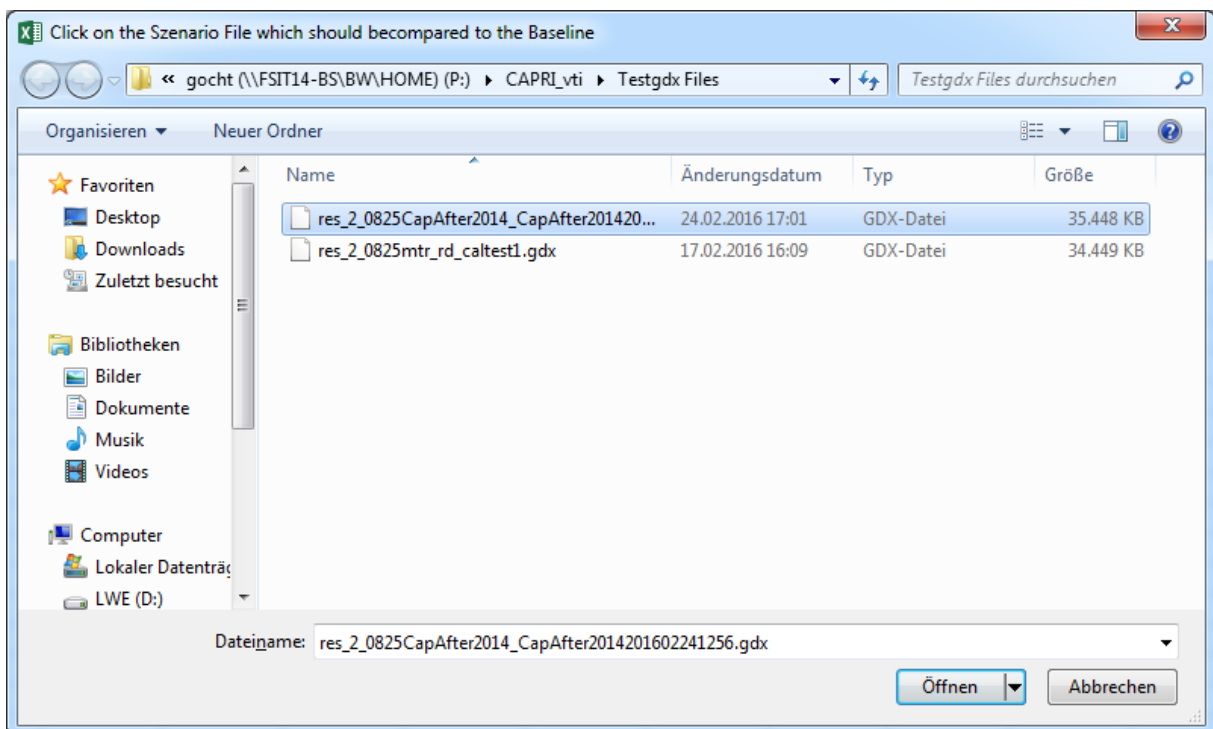
After opening Excel the COM add-in should be loaded and two new Ribbon “CAPRI REPORTS” and “EUROSTAT EUFARM Tool” appear as shown in the next screenshot. The EUROSTAT EUFARM Tool allows to download using the domain name of Eurostat data in GDX file format (description follows).



Right now, there is only a reduced set of options for demonstrating the application. Land Use Supply, Premiums and Land Use Aggregates. This list can be extended to other combinations given in the CAPRI.gdx file and very similar to the XML definition file. When you click, a dialog will pop up and ask you for the baseline file.



Afterwards you need to select at least one scenario. The order of selection determines the order of scenarios.



The program reads then the GDX files and write the selected items in GDX block wise to the Excel file.

