

GAMS-CAPRI Training

Sevilla, 9-11 April 2018

GAMS-CAPRI features (Hands-on exercises)

Maria Blanco

Dep. Agricultural Economics

Technical University of Madrid

maria.blanco@upm.es



Overview

- ❑ [CAPRI sets](#)
- ❑ [CAPMOD components](#)
- ❑ [Defining a new scenario](#)
- ❑ [Running scenarios](#)
- ❑ [Checking results](#)

CAPRI sets

Exercise 1: CAPRI sets



1. To use GAMSIDE to view CAPRI code, first create a GAMS project file in folder CAPRI/GAMS and call it `openIDE.gpr`

2. Open `sets.gms` and find out what the set element "GVAP" means.

.....

3. Find at least three sets where this element is a member

.....

.....

Exercise 2: Master sets



1. Find at least three master sets used in CAPRI

.....

.....

.....

2. How have you identified them?

.....

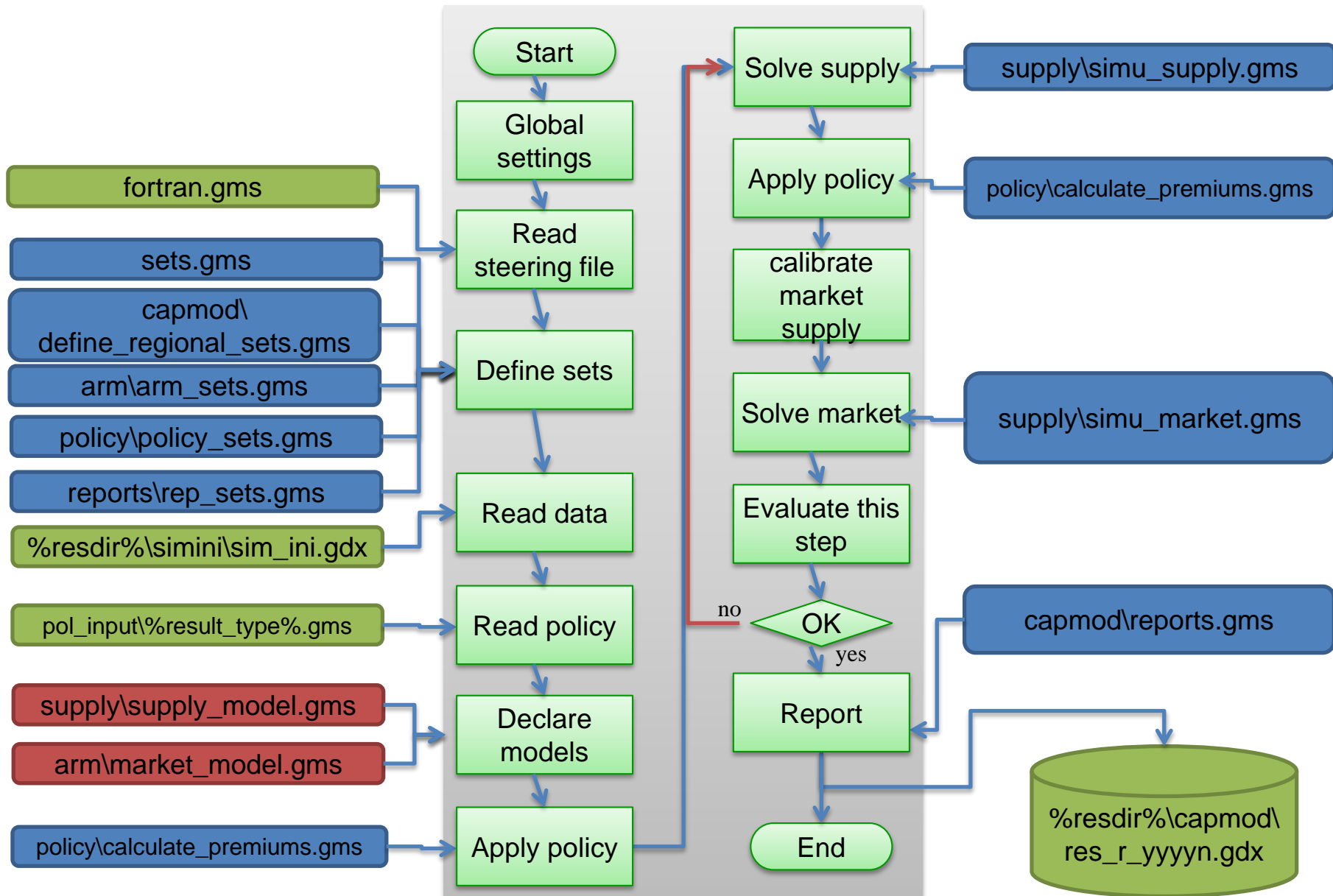
Exercise 3: View sets in Excel file



1. Use GDX2XLS to dump all the content of the file **sets.gms** to an Excel file
 - a) Verify that every set gets its own sheet in the Excel file

CAPMOD components

Program flow of CAPMOD.gms



Exercise 4: CAPMOD modules



1. In which line of capmod.gms is simu_supply called?

.....

2. In which line of capmod.gms is simu_market called?

.....

Exercise 5: Scenarios



1. In which line of capmod.gms is the policy scenario included?

.....

Defining scenarios

Exercise 6: Defining scenarios



1. Make a copy of "gams\pol_input\cap_after_2014\ref.gms" and call it "**cap_ref.gms**". This scenario correspond to the CAPRI baseline and includes the CAP 2014-2020.
2. Create a new scenario "**cap_no_vcs.gms**" to simulate the CAP 2014-2020 but without voluntary coupled support. All other policy measures are identical as in "**cap_ref.gms**"

Running scenarios

Exercise 7: Running scenarios



1. Prepare the batch file

- a) Make a copy of "**GUI\batchfiles\build_database_and_baseline.txt**" and call it "**run_cap_scenarios.gms**"
- b) Check the folder settings at the beginning of the file "**run_cap_scenarios.gms**" and change them to fit yours
- c) Delete all TASKS in this file apart from "Run scenario with market model". Modify this task to fit the two scenarios defined in previous exercise.



2. Run the scenarios using the CAPRI GUI

- a) Open GUI=>Batch execution
- b) First, only compilation. Verify that new `fortran.gms` files have been generated. Find your scenario names in those files.
- c) Next, simulation. Verify the model runs.
- d) Exploit results in the GUI, comparing the new scenario `cap_no_vcs` against the baseline.

Checking results

Exercise 8: Checking results



2. Exploit scenario results using the CAPRI GUI
 - a) Open the results files for the two scenarios and check main results
 - b) Compare results of the NO_VCS scenario against the baseline